



## 4. Specifications:

Parameter	Value	
Type	1X3 or 1x4	
Wavelength (nm)	1310 or 1550	780/850/980/1060
Insertion Loss (dB)	≤1.0(Typ 0.8)	≤1.8(Typ 1.3)
Cross Talk (dB)	≥55	≥55
Return Loss (dB)	≥50	≥50
Extinction Ratio (dB)	≥18	≥16
Repeatability (dB)	≤±0.05	
Switch Time (ms)	10	
Lifetime (cycle)	>1,000,000	
Switch mode	Latching or Non-latching	
Storage Temperature (°C)	-40 ~ +85	
Drive Voltage (V)	5 ±0.5 DC or 5V Pulse or 3V	
Work Current (mA)	<50	
Fiber Type	See order information	
Dimension (LxMxH) (mm)	(L)23×(W)27×(H)8.5	

\*The specifications are w/o connector.

\* For devices with connectors, 0.3dB higher for IL, 5dB lower for RL and 2dB lower for ER.

\* For device with connector, key aligned to slow axis.

## 5. Pin Configurations:

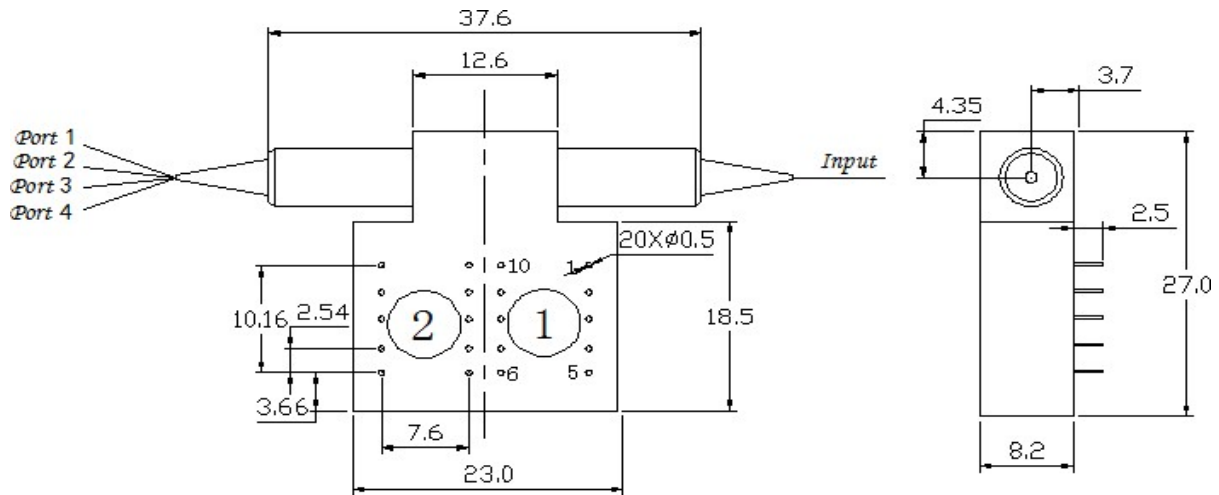
### Latching Type:

Type	Optical Route	Relay	Electric Drive				State Sensor			
			Pin 1	Pin 5	Pin 6	Pin 10	Pin 2-3	Pin 3-4	Pin 7-8	Pin 8-9
Latching	Input- Port 1(Black)	Relay1	--	--	GND	V+	Close	Open	Open	Close
		Relay2	V+	GND	--	--	Open	Close	Close	Open
	Input- Port 2 (red)	Relay1	V+	GND	--	--	Open	Close	Close	Open
		Relay2	--	--	GND	V+	Close	Open	Open	Close
	Input- Port 3(blue)	Relay1	--	--	GND	V+	Close	Open	Open	Close
		Relay2	--	--	GND	V+	Close	Open	Open	Close
	Input- Port 4(White)	Relay1	V+	GND	--	--	Open	Close	Close	Open
		Relay2	V+	GND	--	--	Open	Close	Close	Open

### Non-Latching Type:

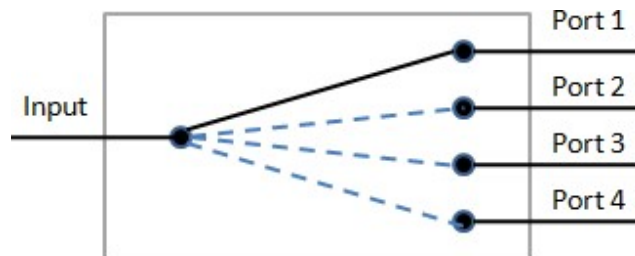
Type	Optical Route	Relay	Electric Drive				State Sensor			
			Pin 1	Pin 5	Pin 6	Pin 10	Pin 2-3	Pin 3-4	Pin 7-8	Pin 8-9
Non-Latching	Input- Port 1(Black)	Relay1	--	--	--	--	Close	Open	Open	Close
		Relay2	V+	--	--	GND	Open	Close	Close	Open
	Input- Port 2 (red)	Relay1	V+	--	--	GND	Open	Close	Close	Open
		Relay2	--	--	--	--	Close	Open	Open	Close
	Input- Port 3(blue)	Relay1	--	--	--	--	Close	Open	Open	Close
		Relay2	--	--	--	--	Close	Open	Open	Close
	Input- Port 4(White)	Relay1	V+	--	--	GND	Open	Close	Close	Open
		Relay2	V+	--	--	GND	Open	Close	Close	Open

## 6. Mechanical Dimensions (Unit:mm)



Input :white      Port1:black      Port2:red      Port3:blue      Port4:white

## Optical Route



## 7. Ordering Information:

Type	Wavelength	Switch Type	Voltage	Fiber Type	Package	Fiber Length	Connector
PMS-1X4	1060=06 C+L=2 1310=3 1410=4 Special=0	Latching=1 Non-latching=2 MINI Latching=3 MINI Non-latching=4 Special=0	3V=3 5V=5 Special=0	SM28=1 50/125=5 62.5/125=6 Special=0	Bare fiber=1 900um tube=3 Special=0	0.25m=1 0.5m=2 1.0m=3 Special=0	None=1 FC/PC=2 FC/APC=3 SC/PC=4 SC/APC=5 ST/PC=6 LC/PC=7 Duplex LC=8 Special=0